



**Save the Children**

# Evidence to Action: How do we support youth livelihood opportunities in a rural context?



Why are we here?

1.8 billion young people aged 10-24

90% live in low- and middle-income countries (LMICs)

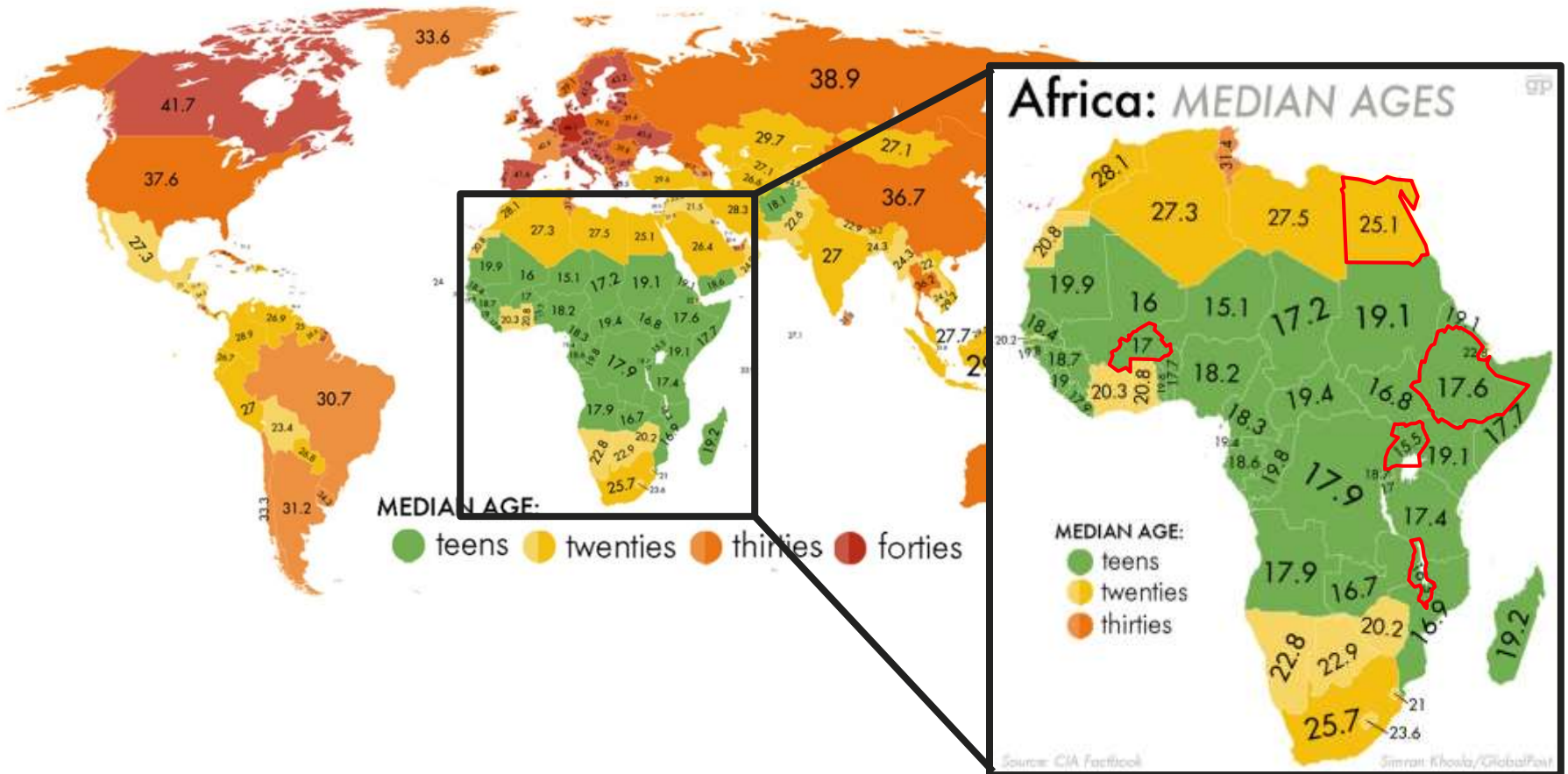
## GLOBAL YOUTH POPULATION 1950



Source: UN, *World Population Prospects: The 2010 Revision*

# 10 youngest nations by age are on African continent

Niger, Uganda, Mali, Malawi, Zambia: ~60% of population under 25



(Khosla, 2014)

# Strong argument for investing in youth

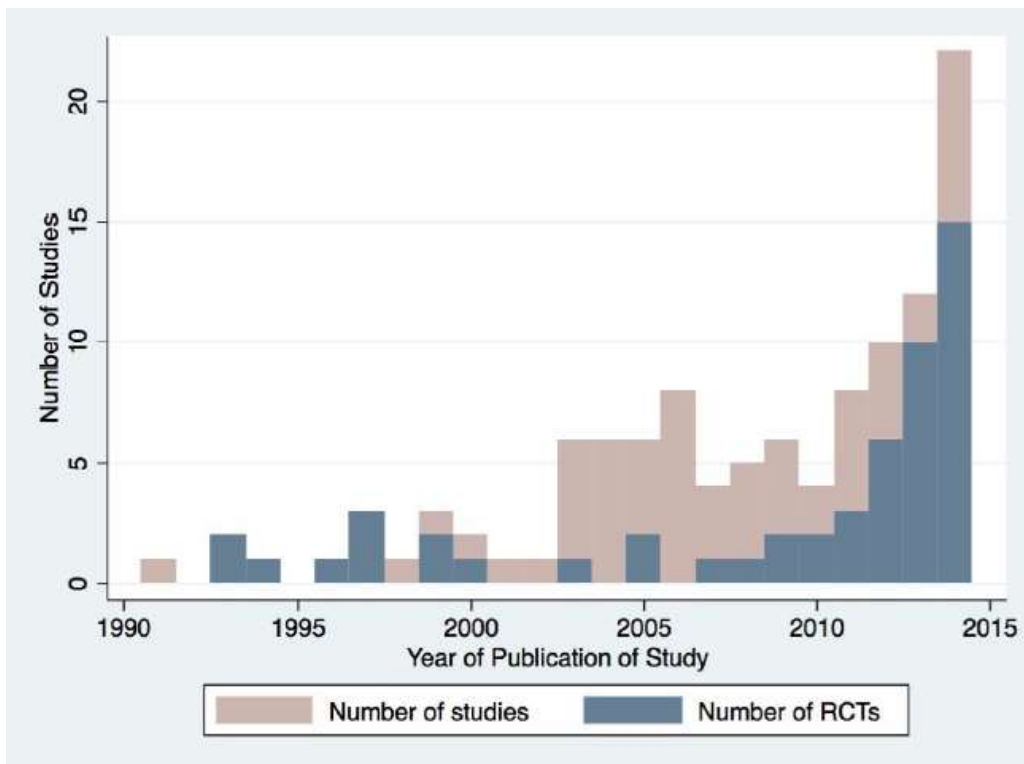
- Averting one youth HIV/AIDS infection=\$34,600 benefit (Commission on Macroeconomics and Health, 2010)
- Cost over lifetime of one cohort of adolescent mothers in Caribbean=\$1.6-335 million (UNFPA, 2010)
- Global average rate of return to one year of schooling: 10% (UNFPA, 201)

Estimated boost in GDP	Jordan	Jamaica	Uganda (girls)	India (girls)
Unemployment	1.8	1.4	--	0.6
School dropout before secondary school	1.5	3.0	34.0	0.3
Teen pregnancy	3.1	1.3	19.2	3.1
HIV/AIDS	--	0.7	--	--
Crime & violence	--	3.2	--	--
Migration	0.2	--	--	--

(World Bank, 2008)

# Increasing focus on youth livelihood development

## But impact evidence is mixed!



(Kluve et al., 2016)

“...**youth workforce development** programs in developing countries are having a positive impact on employment and **earnings.**” (USAID, 2013)

“...**serious** doubt on the efficacy and value of training interventions to help youth enter formal wage employment.” (Fox & Kaul, 2017)

“...**just more than one-third** of evaluation results from youth employment programs implemented worldwide show a significant positive **impact on labor market outcomes.**”

(Kluve et al., 2016)

# Recommendations for research on livelihood development

## Focus on continuous improvement

---



Design programs that draw on evidence-based practices



Need to understand what works, for whom, and when



Understand youth's needs in the context of their communities and their economies



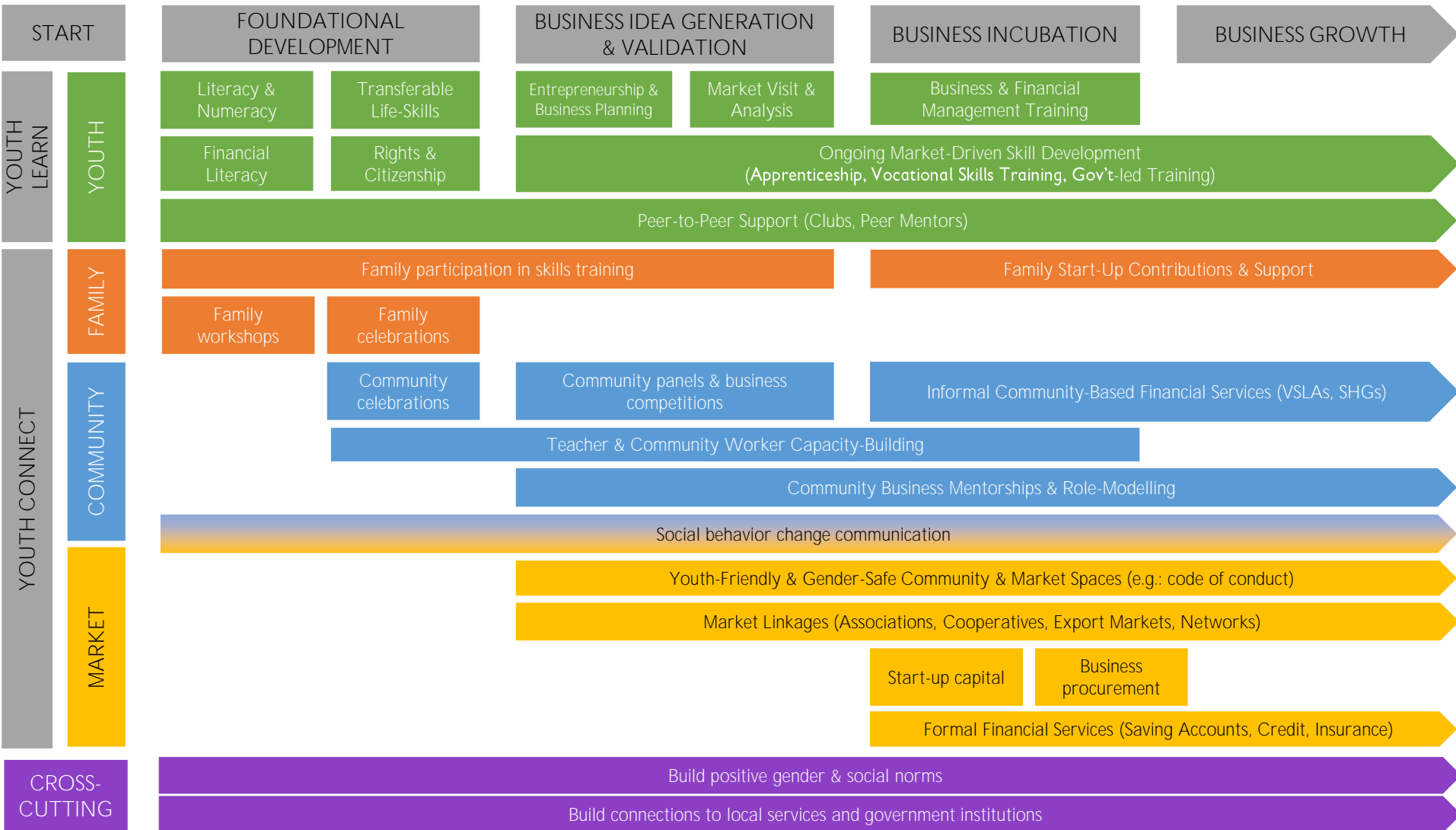
Must better understand “displacement effects” in training programs for youth (Fox & Kaul, 2017)



What approaches do  
we use in youth  
livelihood programming?

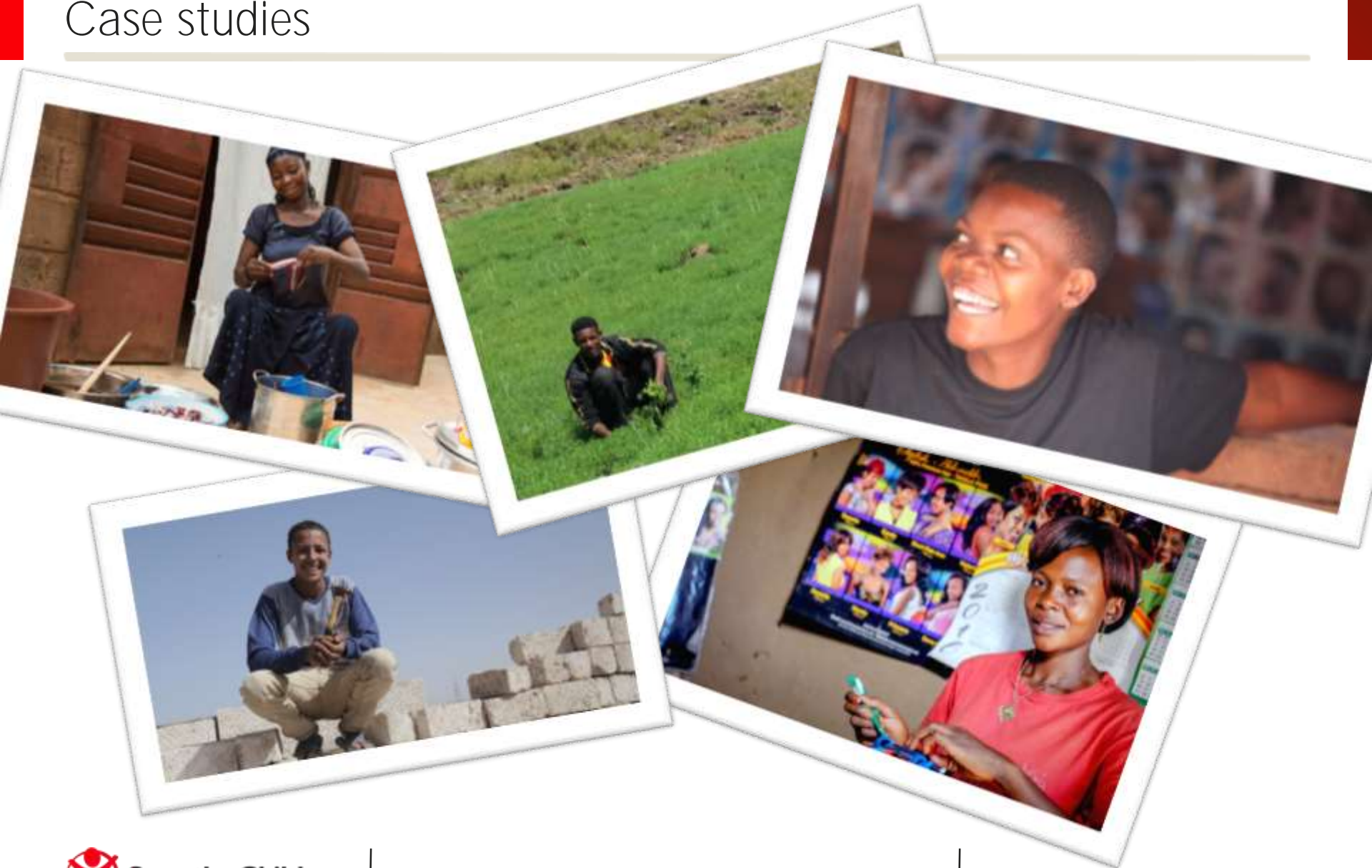
# Pathways to prosperity

## Range of components of livelihood programs



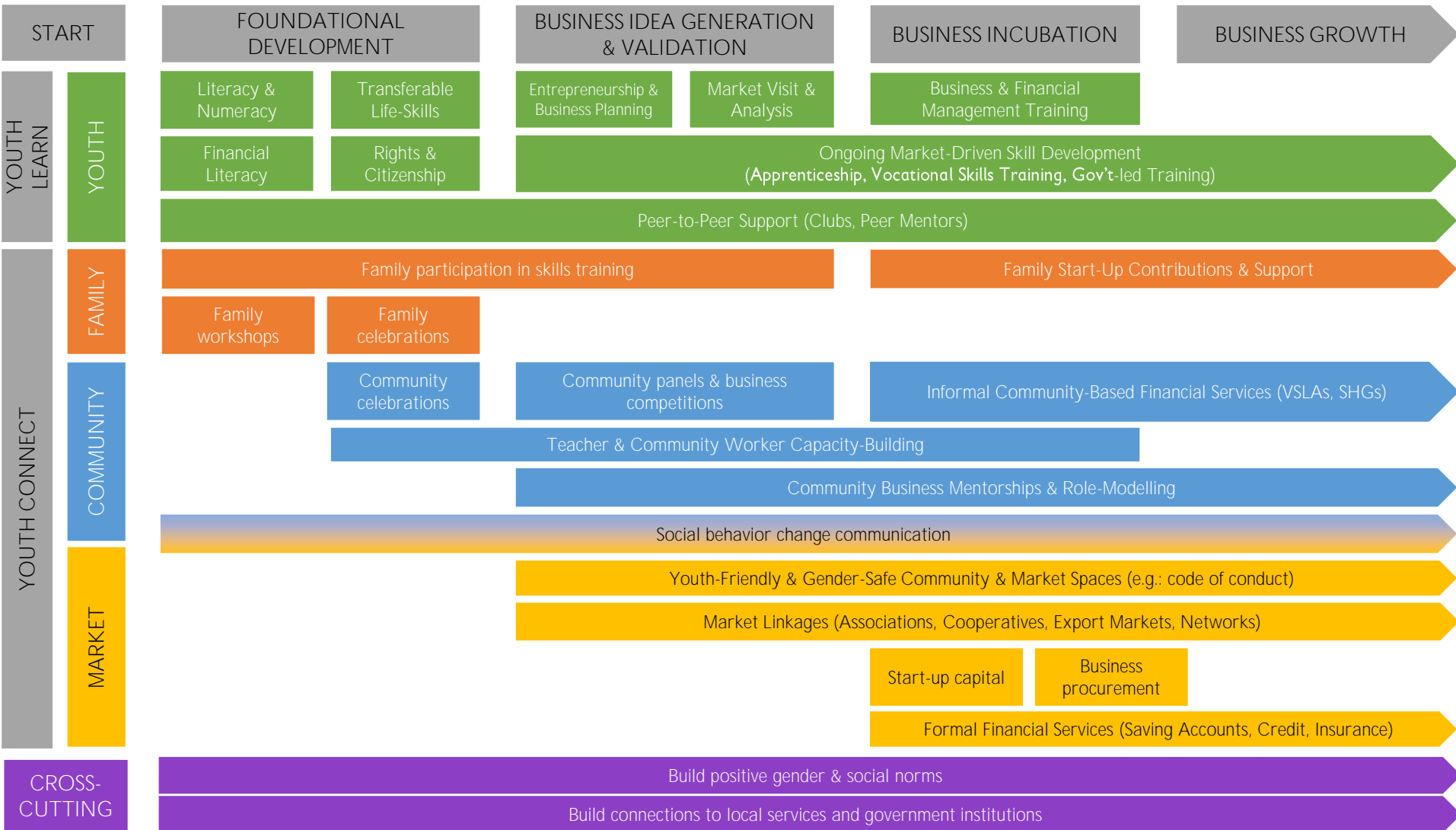
# Pathways to prosperity

## Case studies



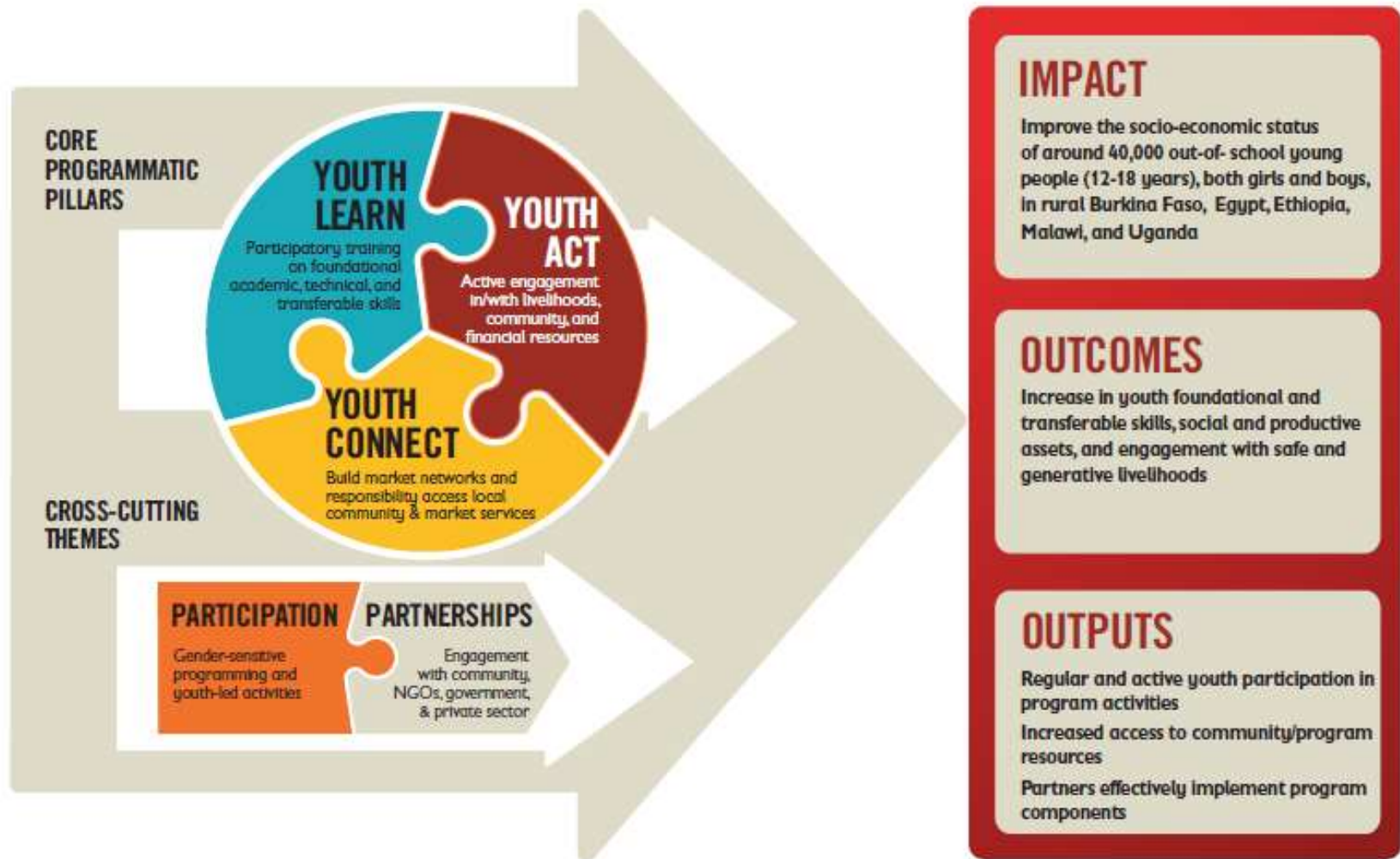
# Pathways to prosperity

## Range of components of livelihood programs





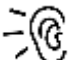






# What is Youth in Action?

# What is Youth in Action?



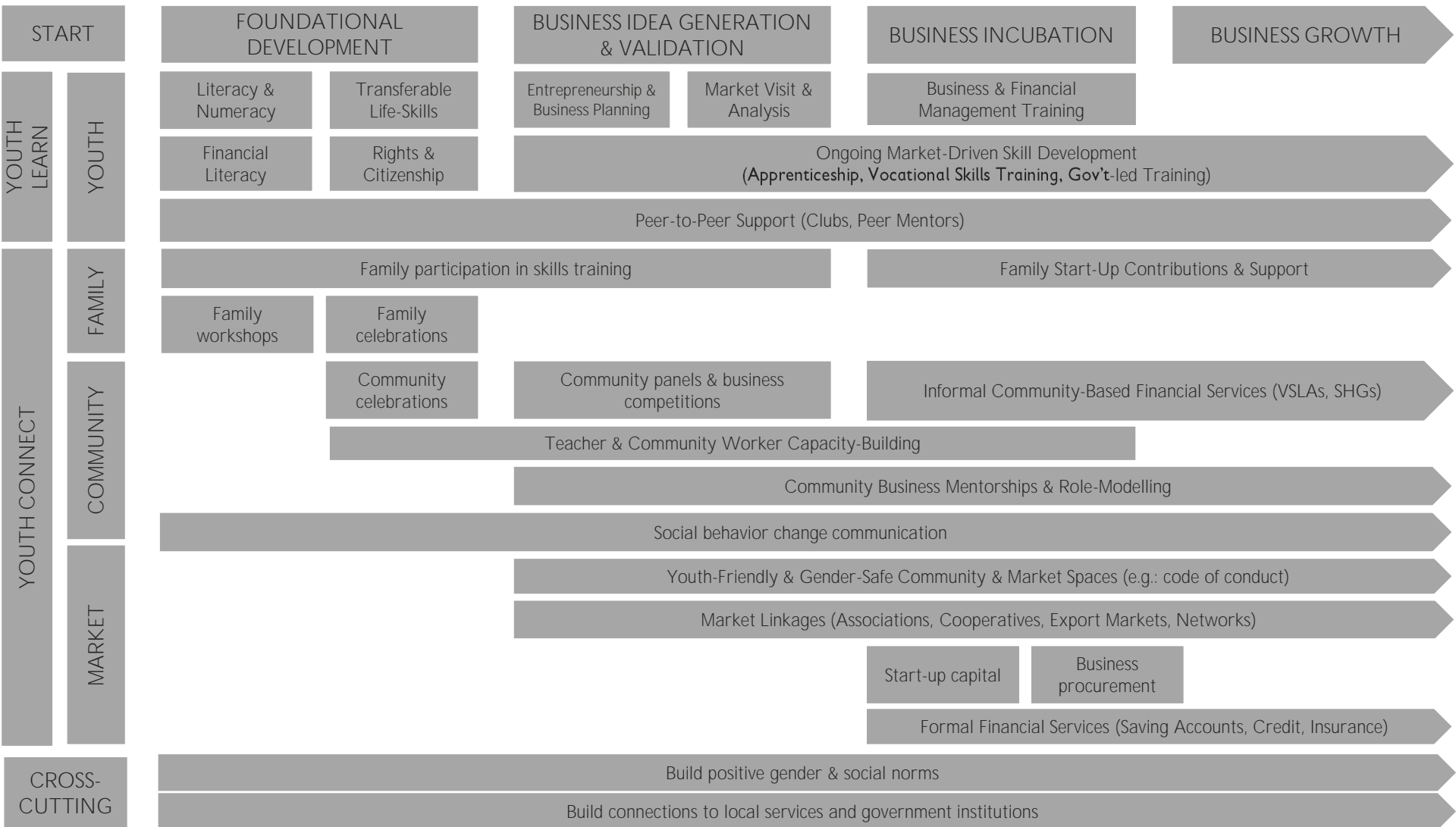
# Who are the YiA youth?

From Program Outcomes Study (*not representative*)

		BURKINA FASO	EGYPT	ETHIOPIA	MALAWI	UGANDA
AGE		17	15	17	16	17
PROGRAM LANGUAGE		100%	100%	100%	100%	95%
# OF LANGUAGES		2	1	1	1	3
OUT OF SCHOOL		100%	99%	100%	99%	97%
FAMILY SIZE		9	6	5	5	7
WEALTH		36%	50%	37%	36%	35%
PARENT		23%	<1%	4%	13%	34%
LEAVES COMMUNITY		5%	3%	12%	17%	9%
WORK		27%	24%	11%	42%	30%

# Pathways to prosperity

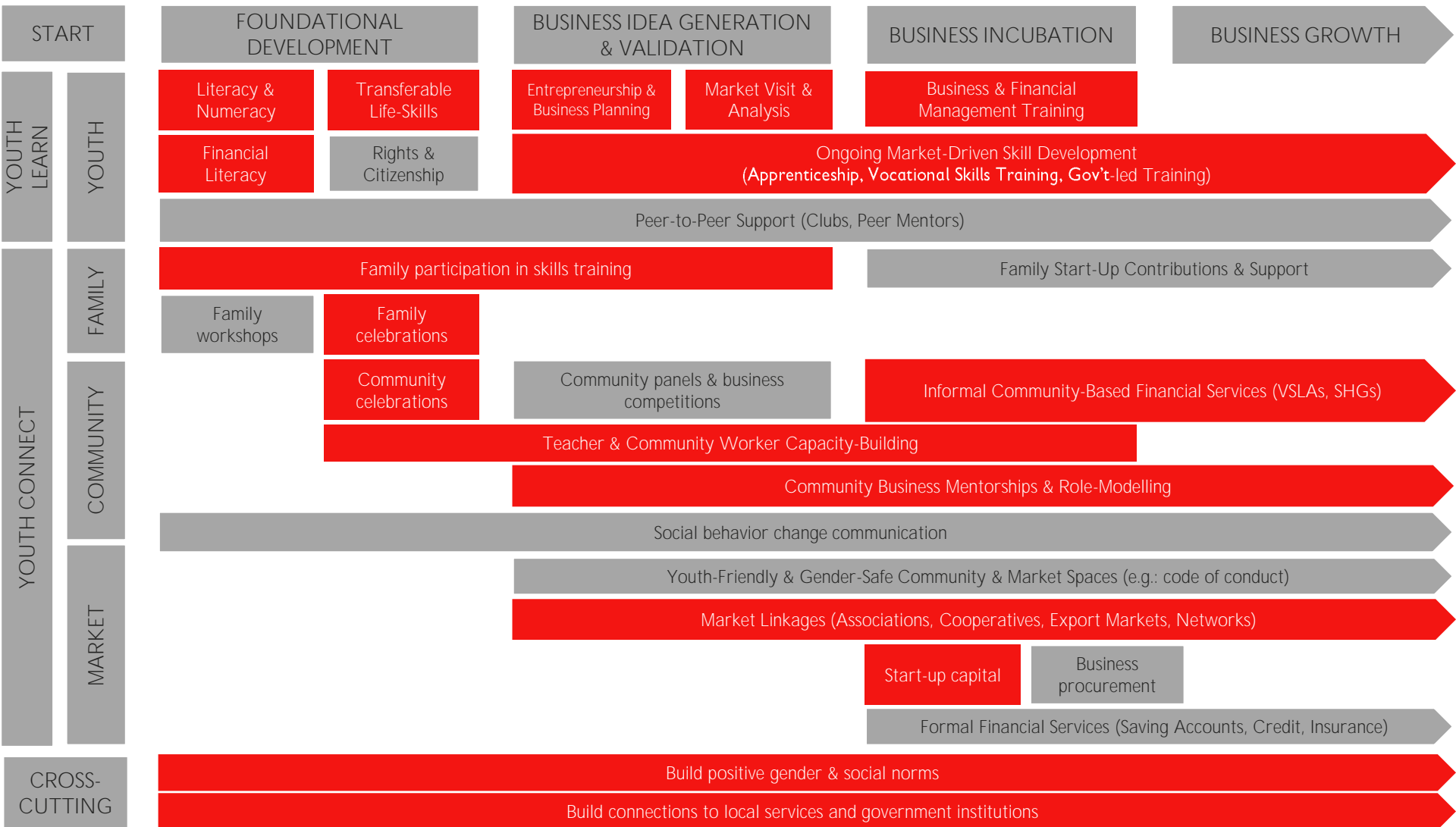
## Components of Youth in Action





# Pathways to prosperity

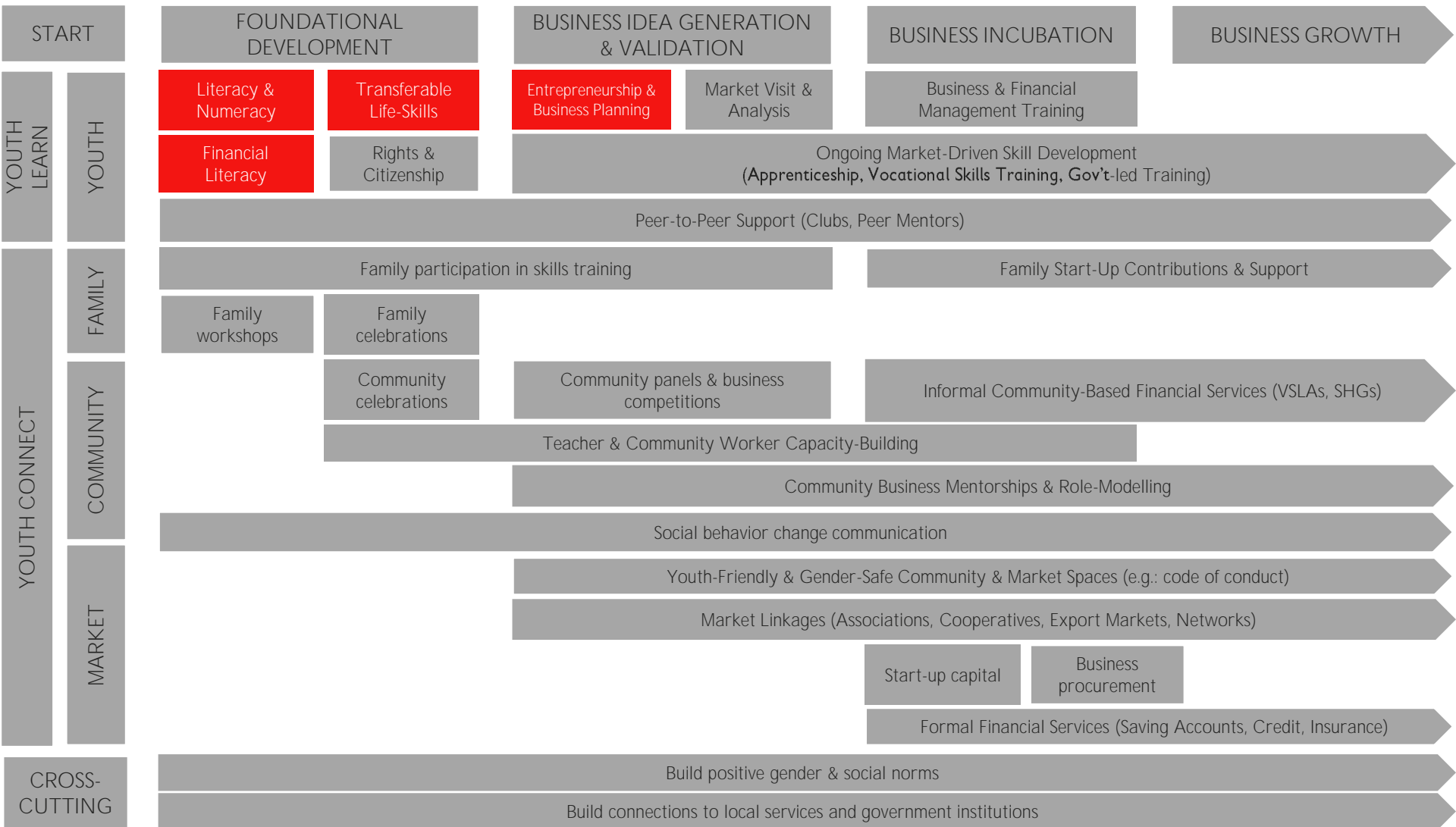
## Components of Youth in Action



What evidence did YiA  
generate for the  
different pathways?

# Pathways to prosperity

## Components of Youth in Action



# Evidence from Youth in Action

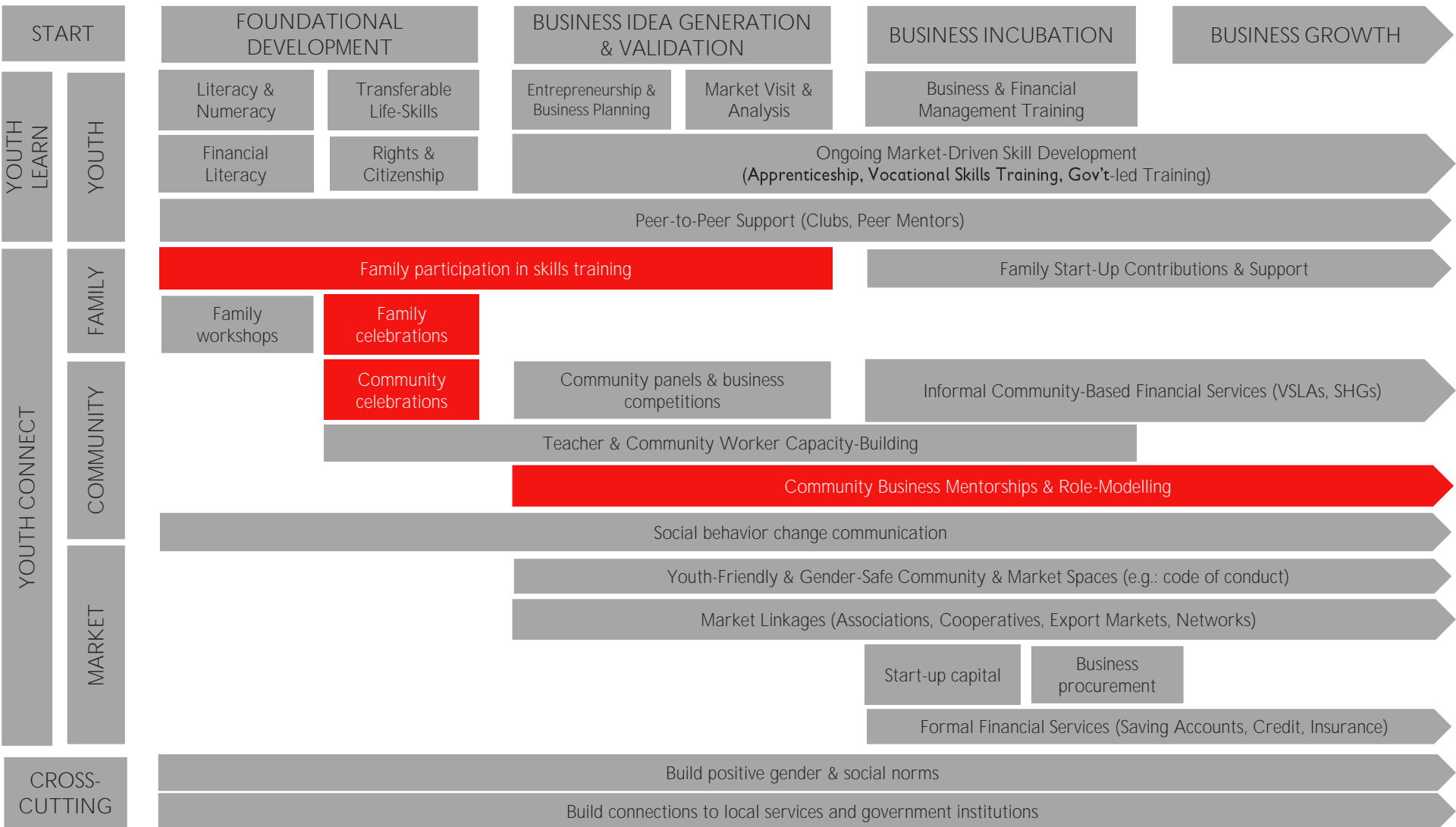
## Gains in work readiness skills

		<b>BURKINA FASO</b>	<b>EGYPT</b>	<b>ETHIOPIA</b>	<b>MALAWI</b>	<b>UGANDA</b>
LITERACY		↑	↑	↑	↑	↑
NUMERACY		↑	↑	↑	↑	↑
FINANCIAL LITERACY		↑	↑	↑	↑	↑
ASSETS & SUPPORTS		↑	↑	↑	↑	↑
COMMUNICATION		↑	↑	↑	↑	↑
SELF-EMPLOYMENT SKILLS		↑	↑	↑	↑	↑

*Controlled for gender, age, household wealth, and work status prior to YiA*

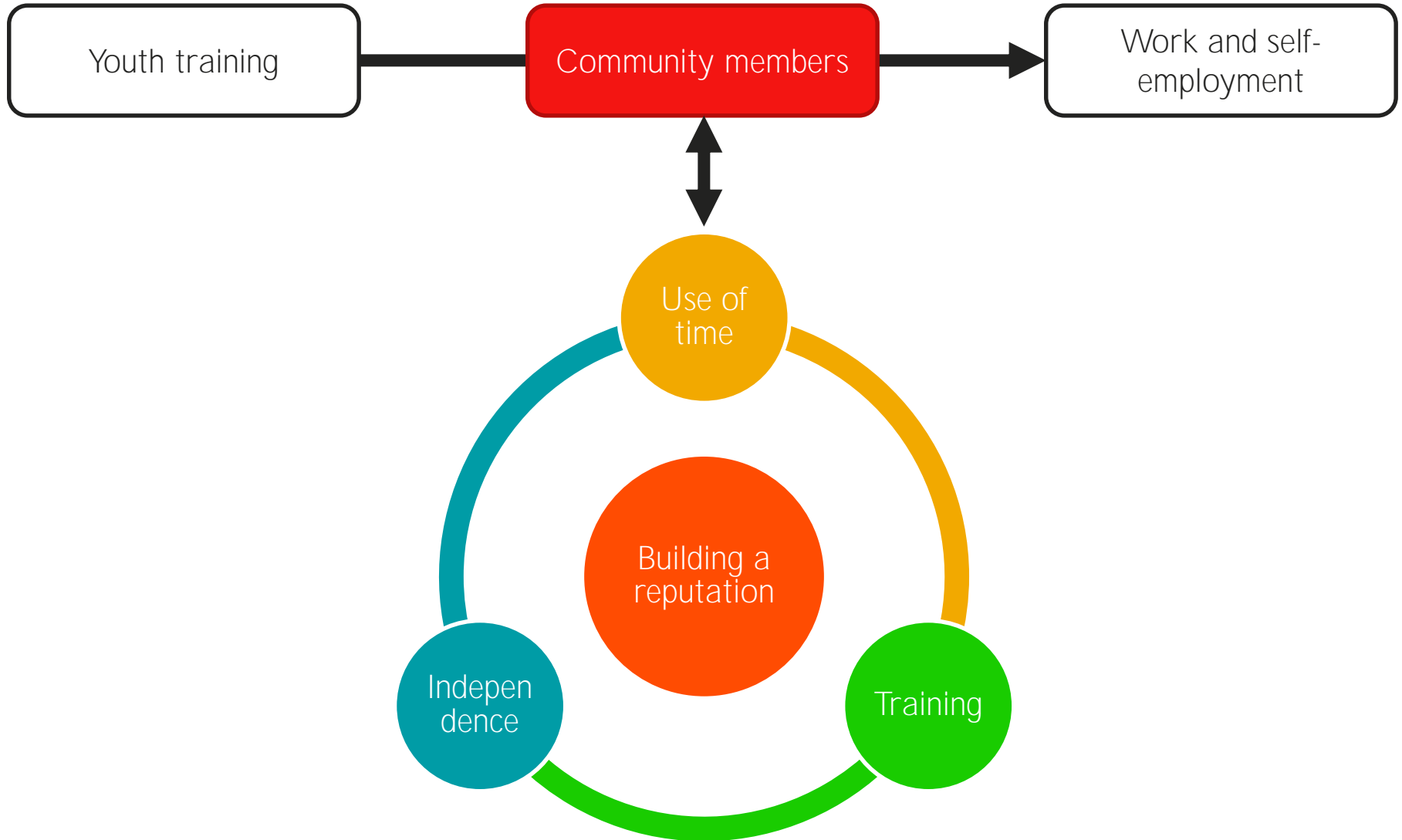
# Pathways to prosperity

## Components of Youth in Action



# Evidence from Youth in Action

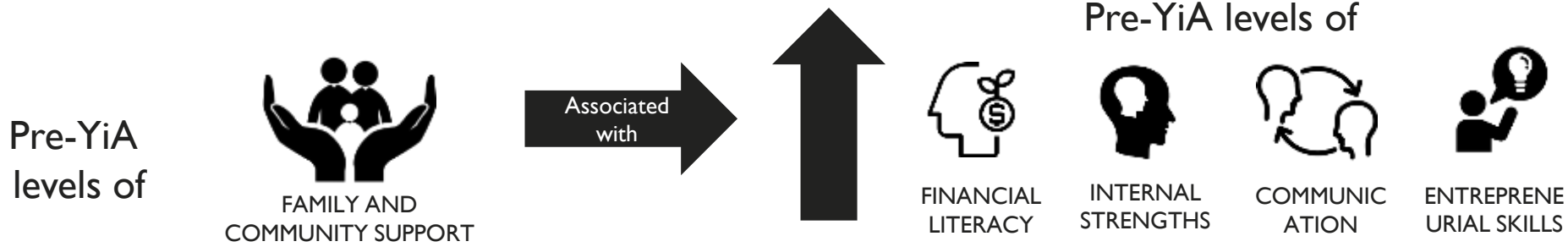
Family and community play key role in livelihood development



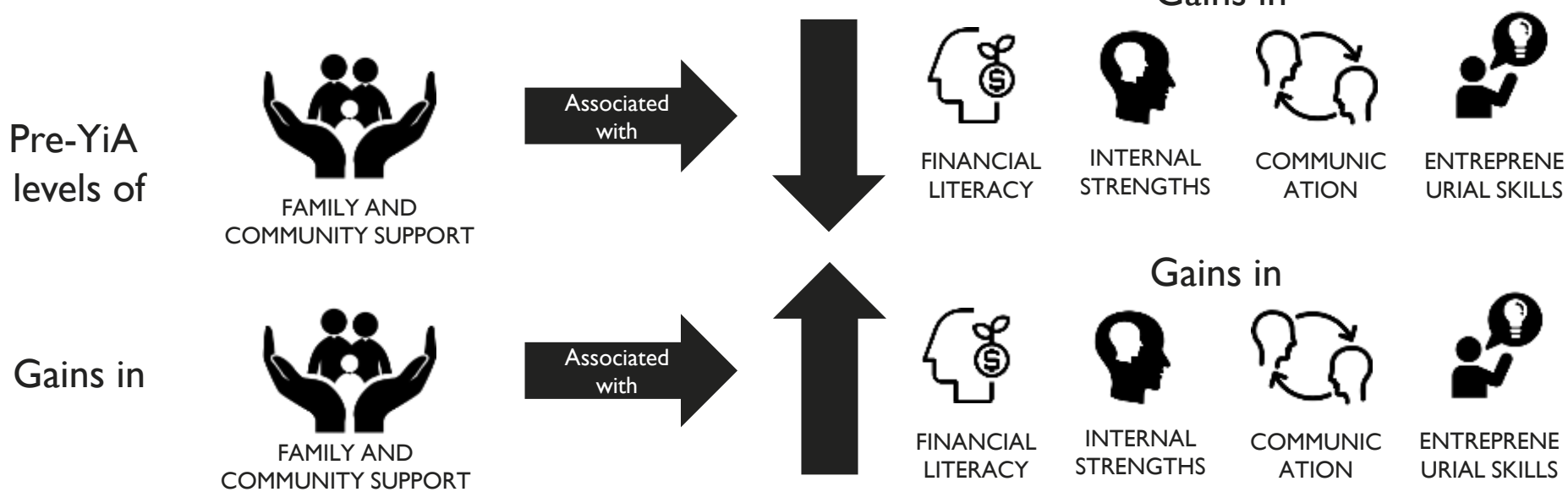
# Evidence from Youth in Action

## Relationship of family support and work readiness skills

### Before Youth in Action



### After Youth in Action



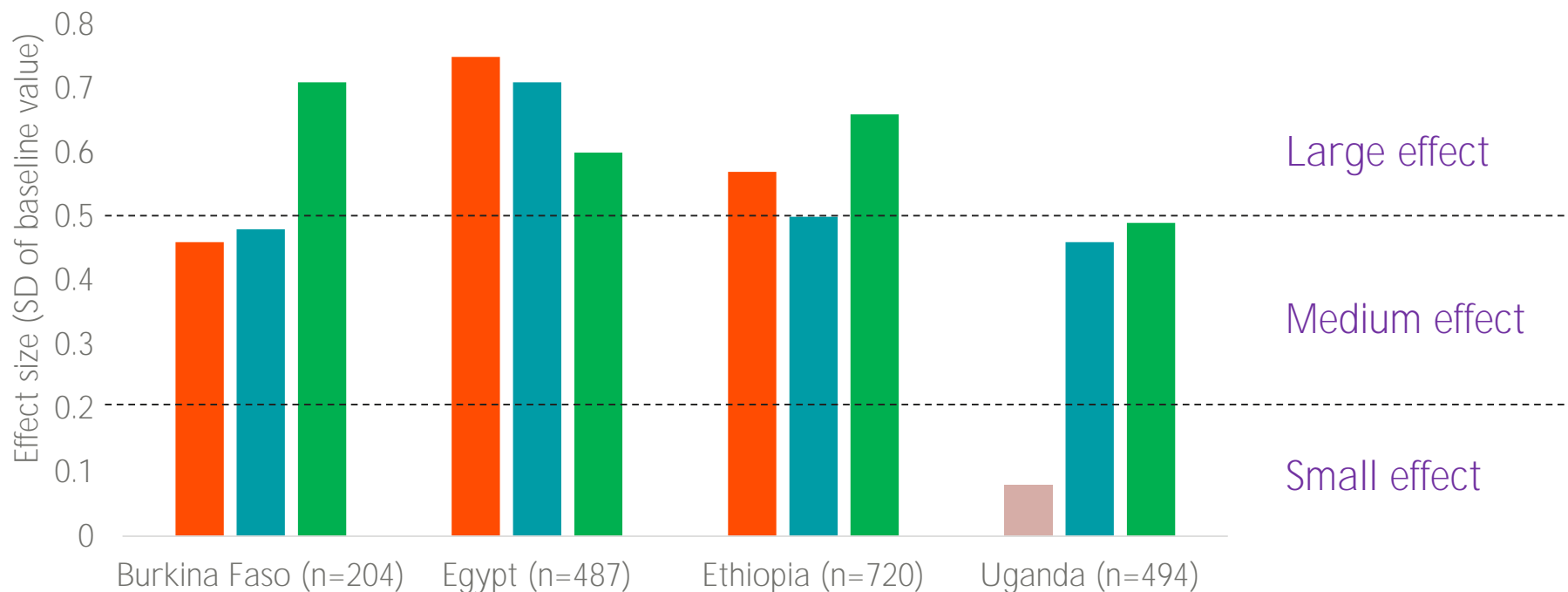
# Evidence from Youth in Action

## Relationship of support and work readiness skills

Effect sizes for gains in family material and emotional support, and mentor work support

*(lighter shades represent gains that are not statistically or practically meaningful)*

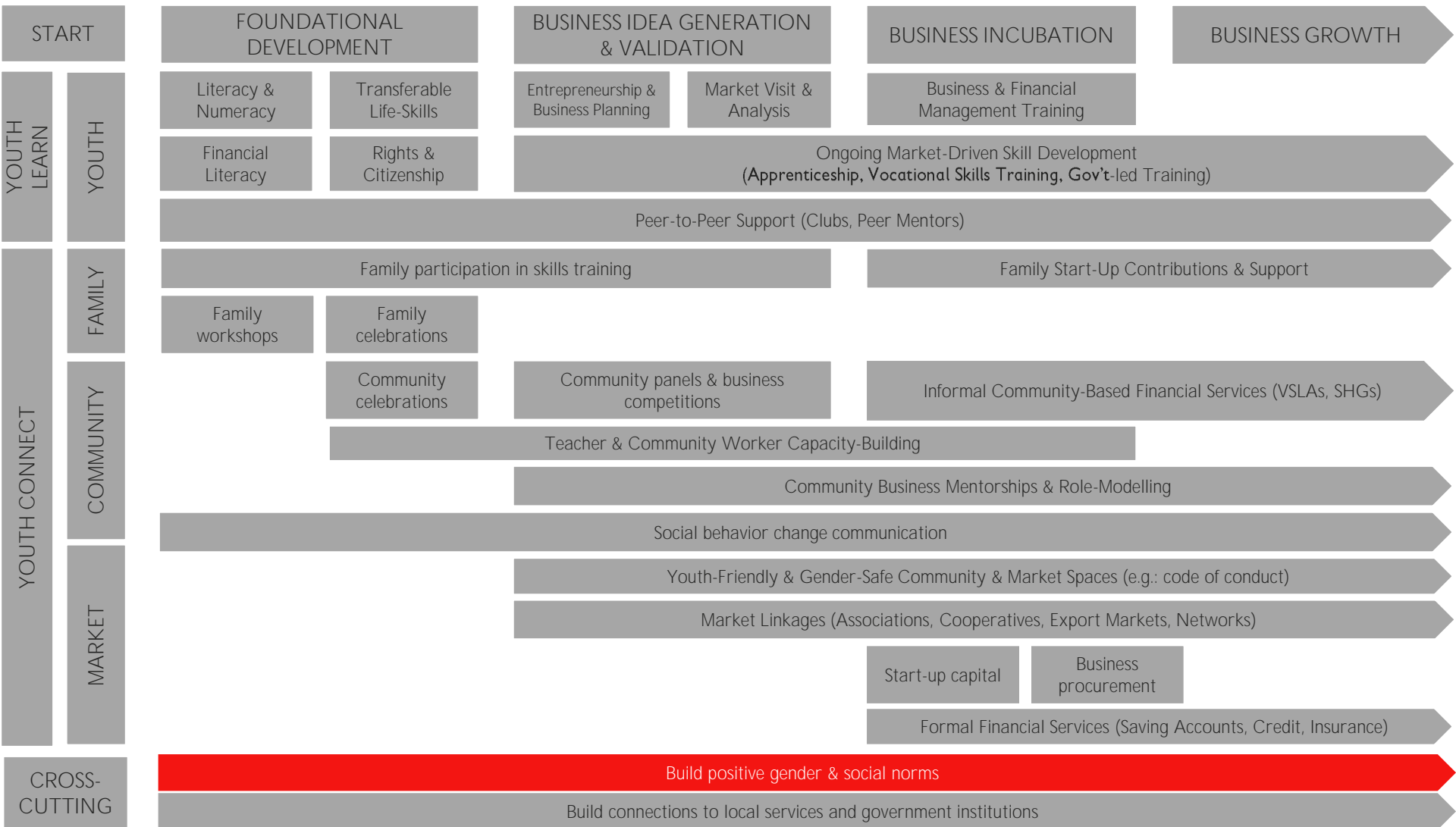
- Material support from family
- Emotional support from family
- Work support from mentor





# Pathways to prosperity

## Components of Youth in Action

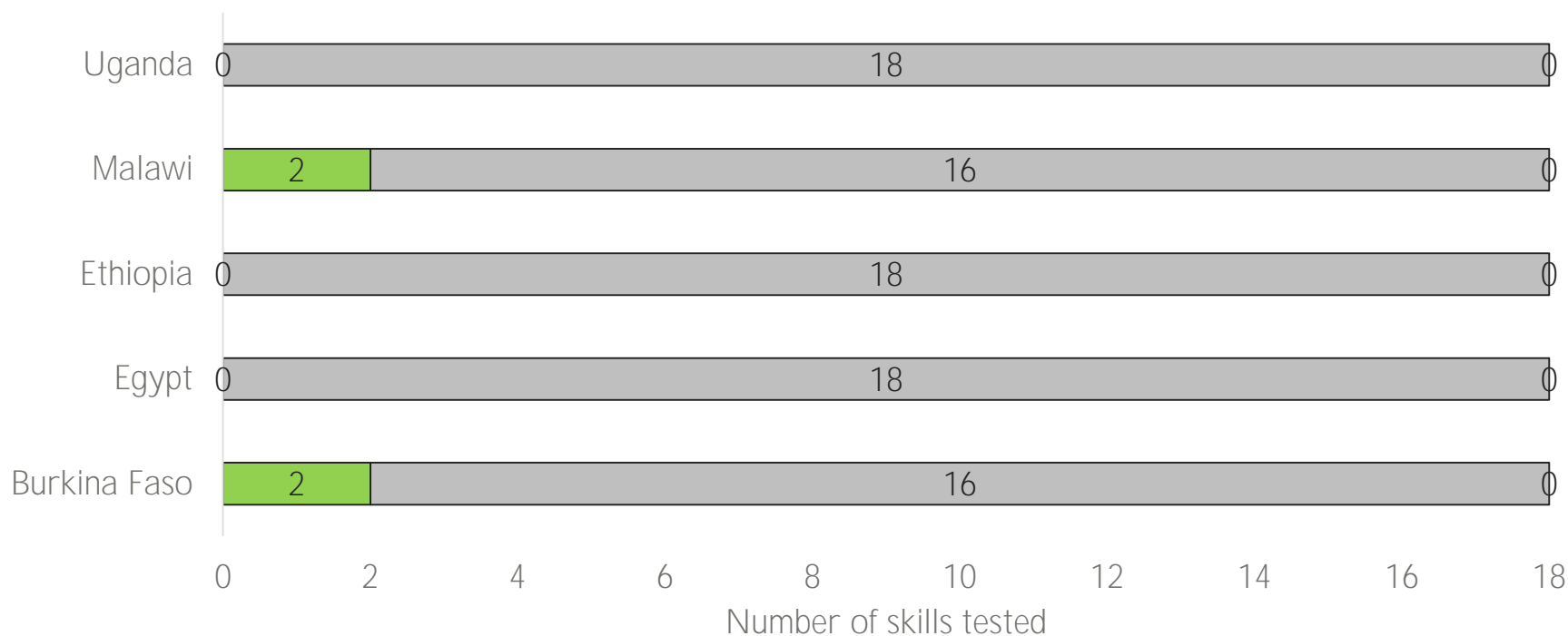


# Evidence from Youth in Action

Very few gender differences in work readiness skills or socioeconomic outcomes

Number of pretest and gains in work readiness skills for which we found statistically and practically meaningful gender differences in favor of males or females

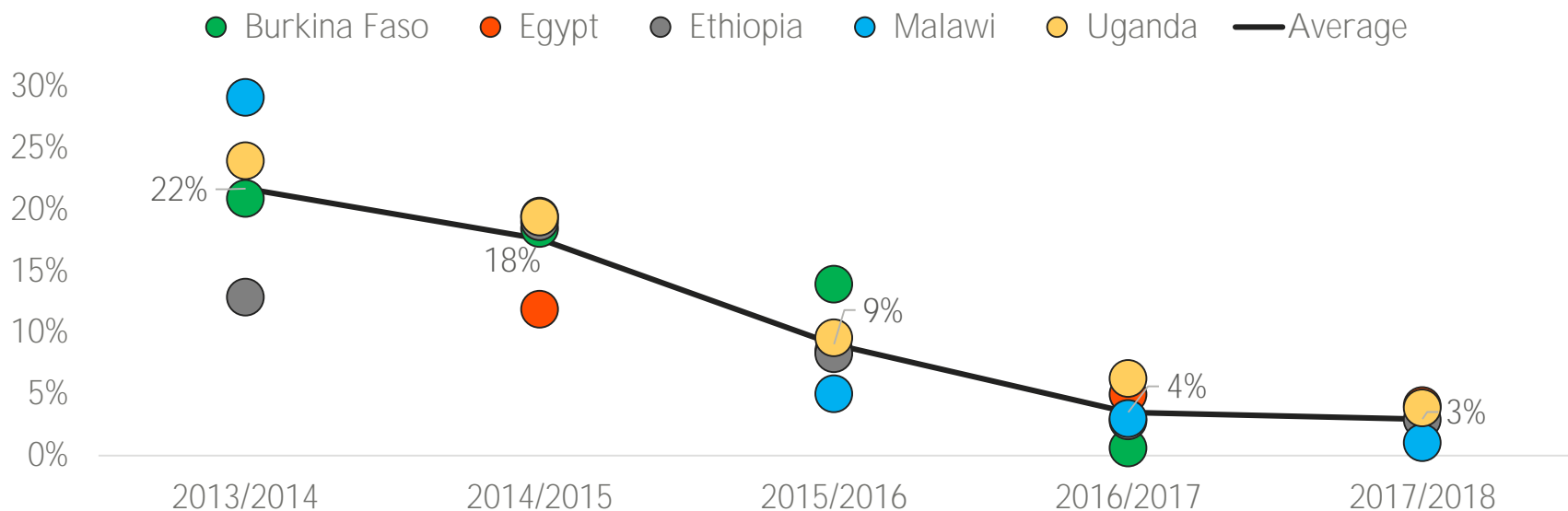
■ Male ■ None ■ Female



# Evidence from Youth in Action

## Gendered barriers still affect youth development

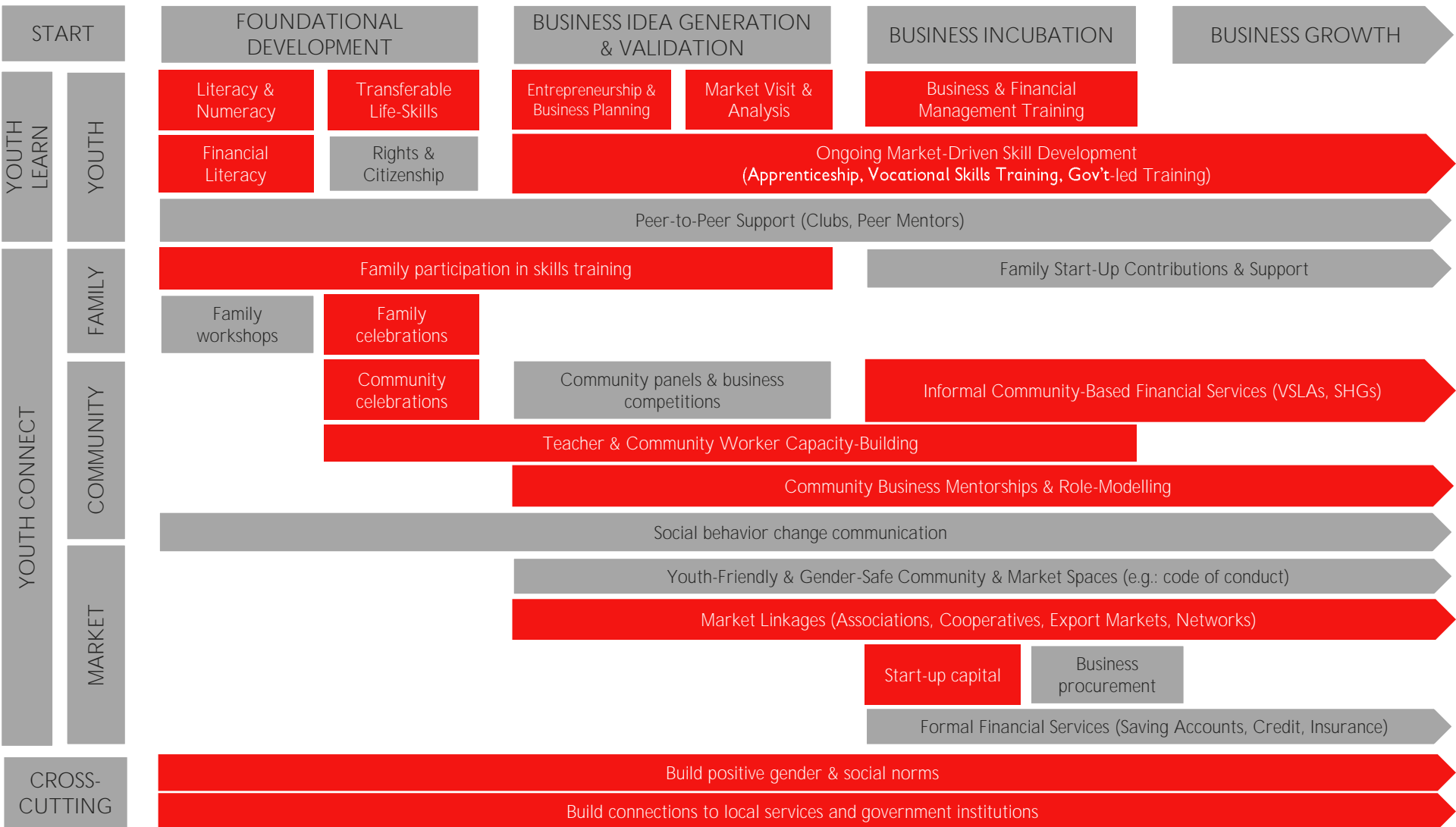
Percent of youth who dropped out of YiA, by country and year



- Program participation affected by gender specific issues
- Interrelated issues of mobility and safety affect livelihood choices
- Family and community support is sometimes different for male and female youth

# Pathways to prosperity

## Components of Youth in Action



# Evidence from Youth in Action

## Increase in youth employment and self-employment

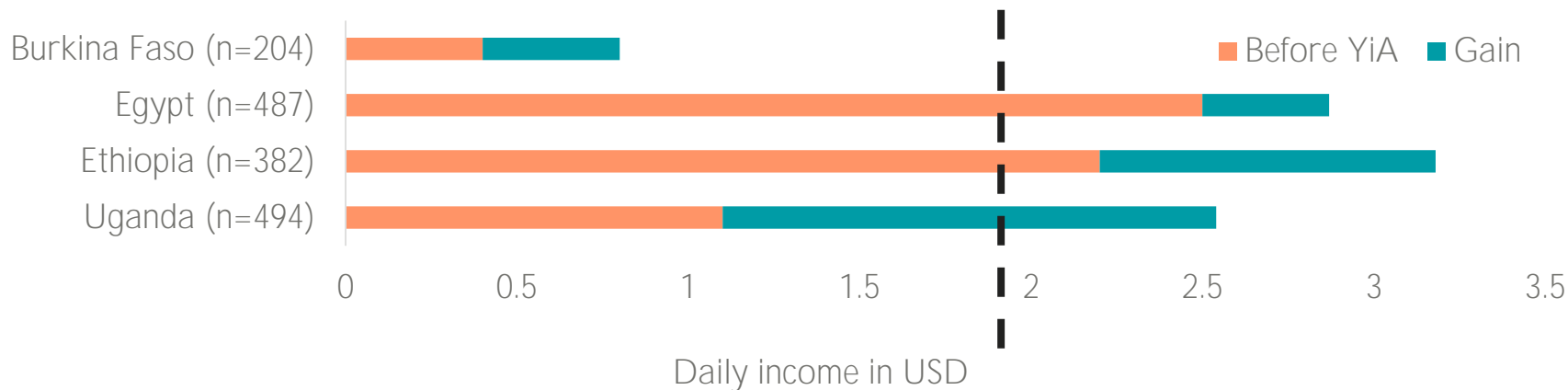
Percent of youth employed, self-employed, or unemployed before and several months after YiA



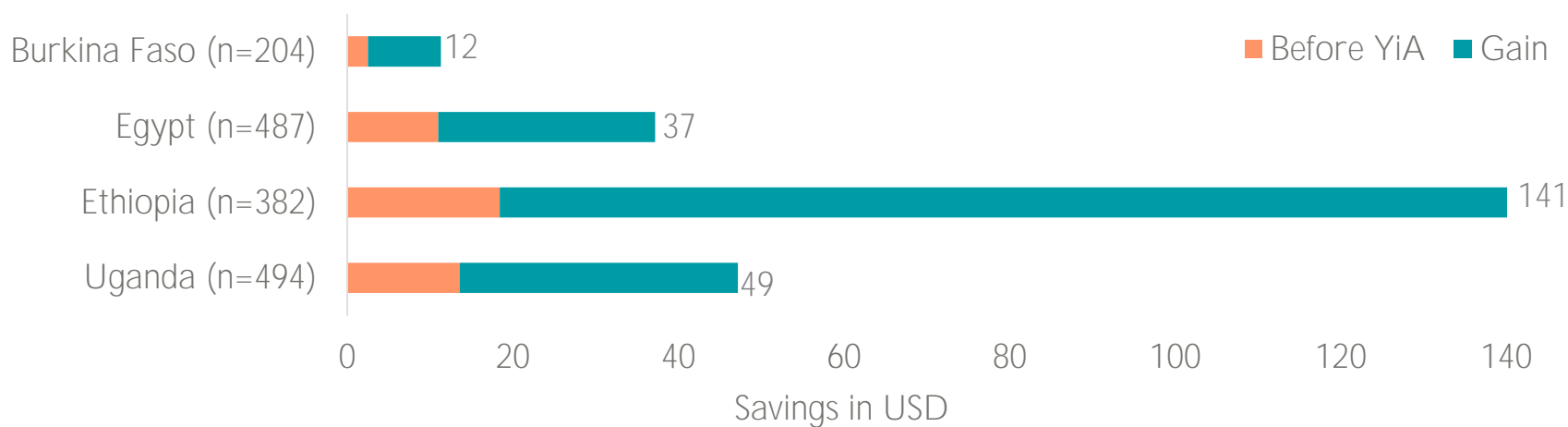
# Evidence from Youth in Action

## Increase in daily income

Gain in daily income (USD) several months after YiA



Gain in savings (USD) several months after YiA



What are the take-  
aways from the  
research?

# Take-aways from YiA research

Build foundational skills in programs for out-of-school, rural youth



Engages families and communities through strategic and explicit programming



Address social norms that are barriers to youth development, even if change is small and iterative



Cross-thematic, socio-ecological programming can have long-term effects on youth outcomes





**THANK YOU**



**Save the Children**